

An aerial photograph of Richardson's Bay, showing a mix of urban development, green spaces, and water. A semi-transparent grey banner is overlaid across the middle of the image, containing the title and date.

Richardson's Bay Anchorage Management

Community Workshop March 14th, 2015

WELCOME!

*Richardson's Bay Regional Agency Board
welcomes you to this community workshop*

*~ Herb Weiner Member, RBRA Board
representing the City of Sausalito*

*~ Kate Sears Chair, RBRA Board
representing the County of Marin*

AGENDA

- **WELCOME**

*Sausalito Councilmember Herb Weiner
Marin County Supervisor Kate Sears
Facilitator John Gibbs*

- **WORKSHOP INTRODUCTION**

- **IDENTIFYING THE ISSUES**

- **CREATING A SUSTAINABLE OPERATION**

- **BREAKOUT GROUP EXERCISE & REPORTING OUT**

- **QUESTION & ANSWER**

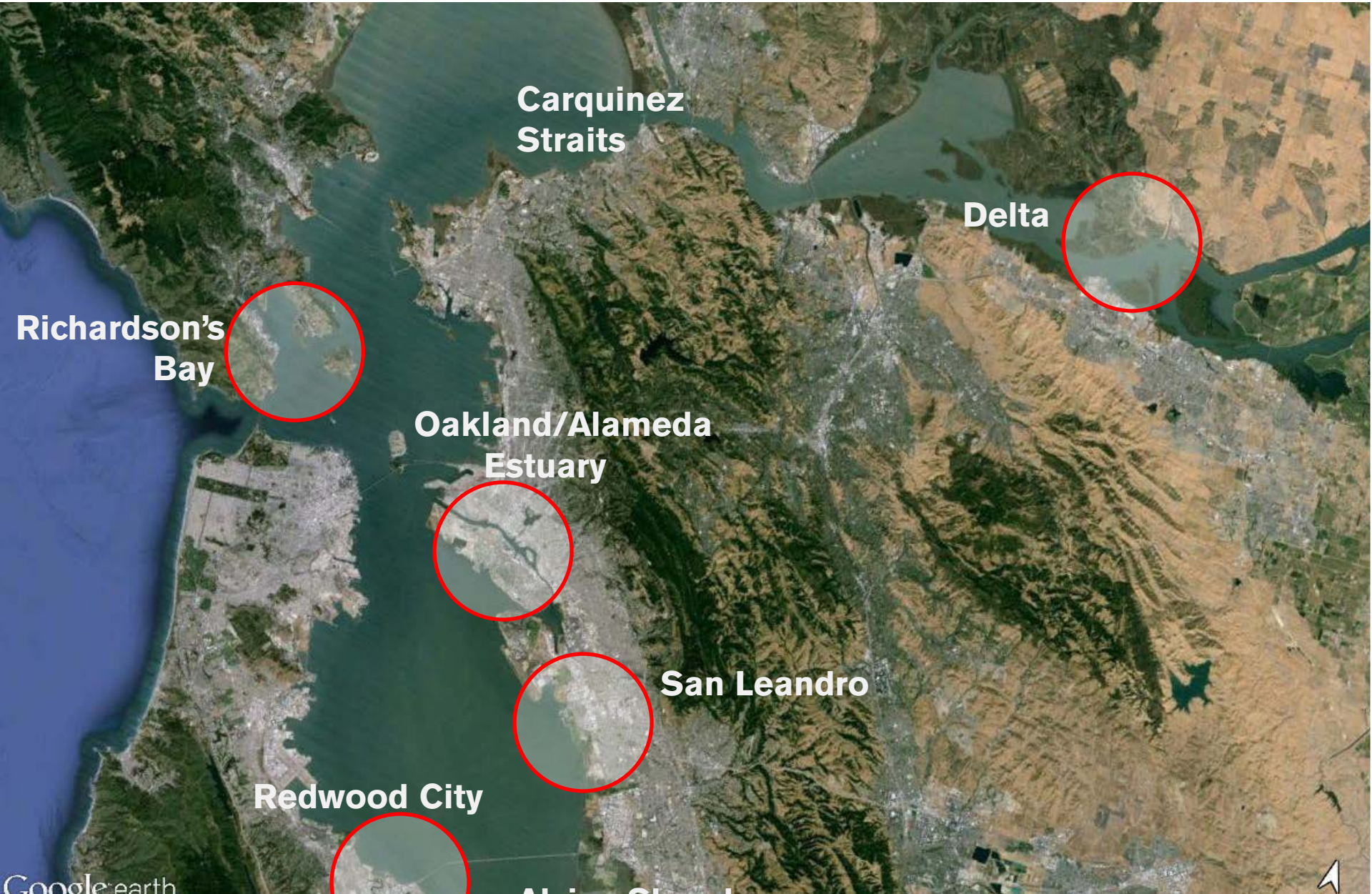
INTRODUCTION



Anchorage in Jeopardy



Anchorage in Jeopardy



Anchorage in Jeopardy

CONTRA COSTA TIMES NEWS

News ▾ Business ▾ Sports ▾ Entertainment ▾ Lifestyle ▾ Opinion ▾ Obituaries ▾

HOT TOPICS: [U.S. ambassador alashed](#) [Circus elephants](#) [Jodi Arias](#) [BFD lineup](#) [Blurred Lin](#)



OVER 500 FRESH DEALS WEEKLY

Home ▾ News ▾ Story

150-foot sunken tugboat with environmental concerns lifted from Oakland Estuary

By Kristin J. Bender Oakland Tribune

POSTED: 12/21/2013 02:51:20 PM PST | UPDATED: ABOUT A YEAR AGO

0 COMMENTS



A diver exits the water after checking the tension on the chains used to haul the sunken tug Respect to the surface of the Oakland Estuary on Wednesday, Dec. 18, 2013, in Oakland, Calif. The tug, which sank at its moorings in 2007, will be hoisted to the surface and transported to a nearby yard for scrapping. (Photo courtesy of Thomas McKenzie/U.S. Coast Guard)

ALAMEDA -- Six years after it sank, a 150-foot tugboat that was posing a substantial threat to



OaklandNorth

Politics Economy Crime Education Health Environment Culture

As the economy sinks, homeless people move onto abandoned boats



Andrea Nichols, 56, was homeless for 10 years before she moved on to a boat in the Oakland estuary. "I'm homeless, but I'm not boatless," she says.

By Amina Waheed,
Posted March 14, 2012 7:26 am

[Like](#) [reddit this!](#) [Tweet](#)

Anchorage in Jeopardy

marinij.com
NEWS

News Sports Business Entertainment Lifestyle Obituaries Opinion Blog

Home News

Richardson Bay becoming parking lot for vessels



Boats in Richardson Bay, seen on Thursday, are anchored off the shore of a marina in Sausalito. City officials say that more boats are turning up in Richardson Bay as people drop anchor or leave derelict boats behind.

By Mark Prado

Bohemian.com

News, music, movies, restaurants & wine culture in Sonoma, Marin and Napa counties

NEWS & FEATURES MUSIC, ARTS & CULTURE FOOD & DRINK COLU

News & Features » Features

July 18, 201

f Like 114

t Tweet

Pin it

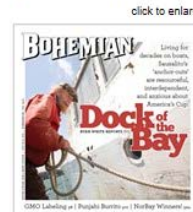
+ Share

Add to favorites

The Anchor-Outs

In Sausalito's shadow, a community adrift

BY RYAN WHITE



Michael Amsler

Late last January, Phil McGovern's cell phone rang around 4am, that most ominous of hours. It was the U.S. Coast Guard on the other end, calling to inform McGovern that the anchored boat he called home was spouting flames, its hull inching lower into the dark depths of Richardson's Bay with each passing minute.

The fire, fueled by a deck full of hoarded clutter, quickly consumed the vessel, and with it, McGovern's beloved onboard library. As an unemployed carpenter, McGovern had spent the past year rebuilding the boat, whose charred remains would soon come to rest on the shallow bay's muddy floor. The fire's cause remains a mystery.

SLIDESHOW



Sausalito's 'Anchor-Outs'
Life on the water with Sausalito's boat-dwelling community

By Michael Amsler
Click to View 26 slides

Anchorage in Jeopardy

Anchorage Census & Vessels Disposed



Anchorage in Jeopardy

Debris Removed from the Bay

Location	Time Period	Number of Vessels	Tons
Richardson's Bay	1997 - 2013	797	9,900
Redwood City	1996 – 2003	113	1000
Contra Costa County	2005 - 2011	186	NA

Source: BCDC 2013

Anchorage in Jeopardy

“At a glance, the Richardson Bay anchorage presents a postcard maritime scene.....But for those who call the bay's waters home, it's often a life less than idyllic, one full of daily challenges and perils. Beyond harrowing winter storms and the practical difficulties of daily life afloat, chronic unemployment, substance abuse, mental health problems and poverty afflict many of the bay's residents.” Bohemian.com 7/18/12



Anchorage in Jeopardy



Environmental Impacts



Human Health & Safety



Public Safety & Law Enforcement

RBRA
State Lands Commission
Bay Conservation &
Development Comm.
State Fish & Wildlife
County of Marin & Cities
Army Corps of Engineers
US Coast Guard

Jurisdictions



RBRA Operations & Finance



Shore Facilities

Jurisdictional Background



RBRA: Richardson's Bay Regional Agency

Belvedere, County of Marin, Mill Valley, Sausalito & Tiburon

- **Anchorage safety**
- **Water Quality**
- **Manages disposal operations and VTIP (Vessel Turn-In Program)**
- **Issues permits for temporary anchoring**
- **Charged with enforcing regulations**

Jurisdictional Background



- **State Lands Commission**

Jurisdiction over the entirety of Richardson's Bay. Under Senate Bill 595, the SLC has authority to remove vessels.

- **Bay Conservation & Development Commission**

"bay fill", which includes boats anchored over 30 days; can enforce regulations

- **Army Corps of Engineers:** channel maintenance, permits

Jurisdictional Background



- **US Coast Guard**
Ensures public safety, removes hazardous materials, regulates vessel safety
- **CalRecycle**
Major grant source for vessel disposal
- **State Division of Boating & Waterways**
Funding partner for vessel disposal

RBRA History and Regulatory Charge

An aerial photograph of Richardson's Bay, showing the coastline, surrounding hills, and urban areas. The image is semi-transparent, allowing text to be overlaid on it.

1984 RB Special Area Plan

- Recommended uniform policies and regulations for Richardson's Bay.

Richardson's Bay Regional Agency created in 1985

- 5 member jurisdictions: Belvedere, Marin County, Mill Valley, Sausalito, and Tiburon
- Implementing the Special Area Plan
- Create policy, establish powers, and perform duties
- Neither private residential uses nor long-term vessel storage are legal

Waterfront Planning



1989 Sausalito General Plan

1989 Marinship Specific Plan

- Emphasizes water-dependent / water-related uses

2010 Waterfront & Marinship Vision (WAM)

- Protect heritage & environment
- Identify infrastructure and amenity needs
- Foster revitalization

IDENTIFYING THE ISSUES

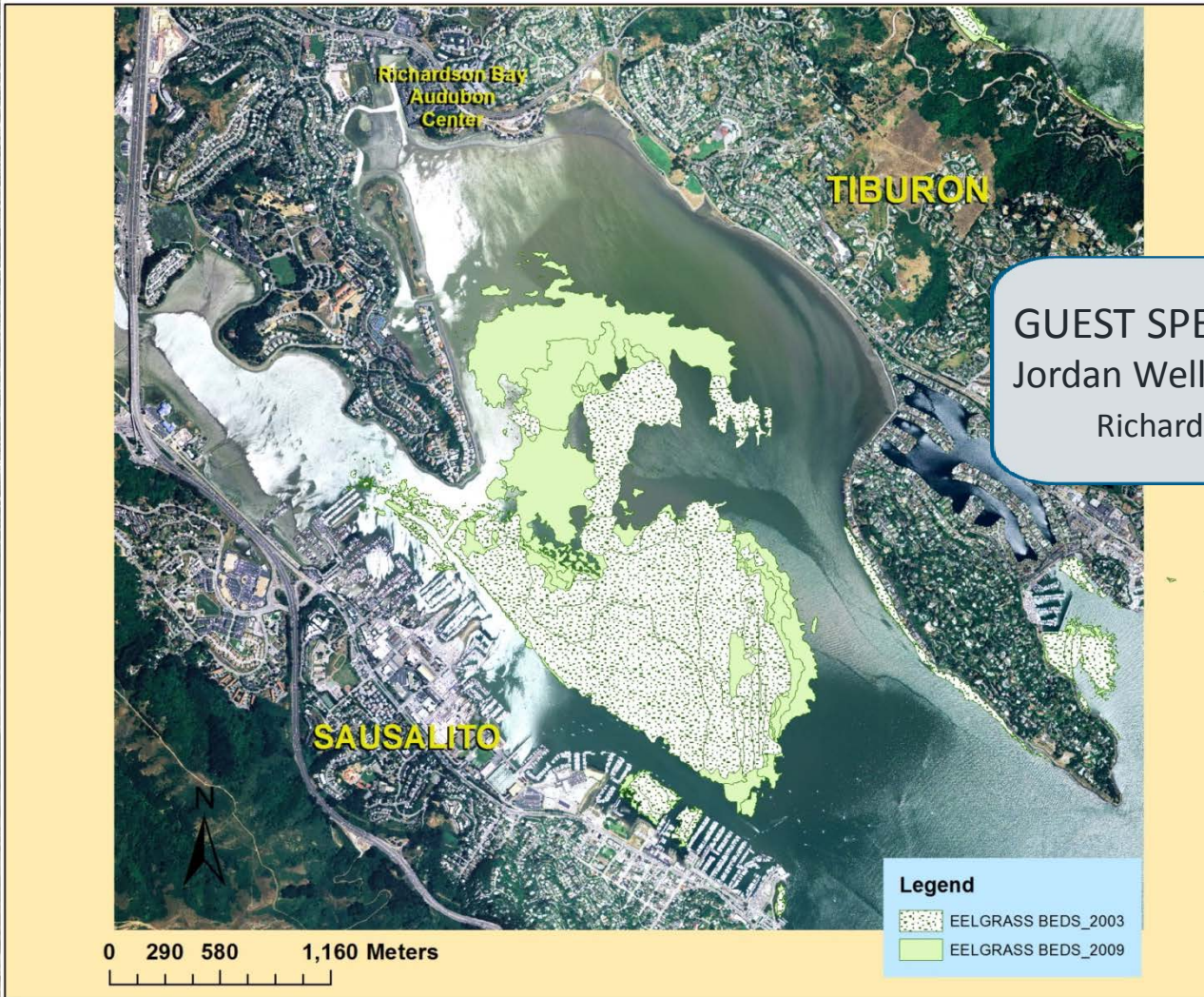


Environmental Issues



- **Unique fishery and marine avian habitat**
- **Audubon managed winter sanctuary**
- **Named one of 148 important bird areas in California**
- **Anchor/chain damage to Eelgrass** (see Marin Scope article 8/3/2010)
- **Raw sewage**
- **Oil and chemical spills**
- **Debris piles on boats**

Environmental Issues



GUEST SPEAKER:
Jordan Wellwood, Executive Director
Richardson Bay Audubon Sanctuary

Richardson Bay Eelgrass Beds

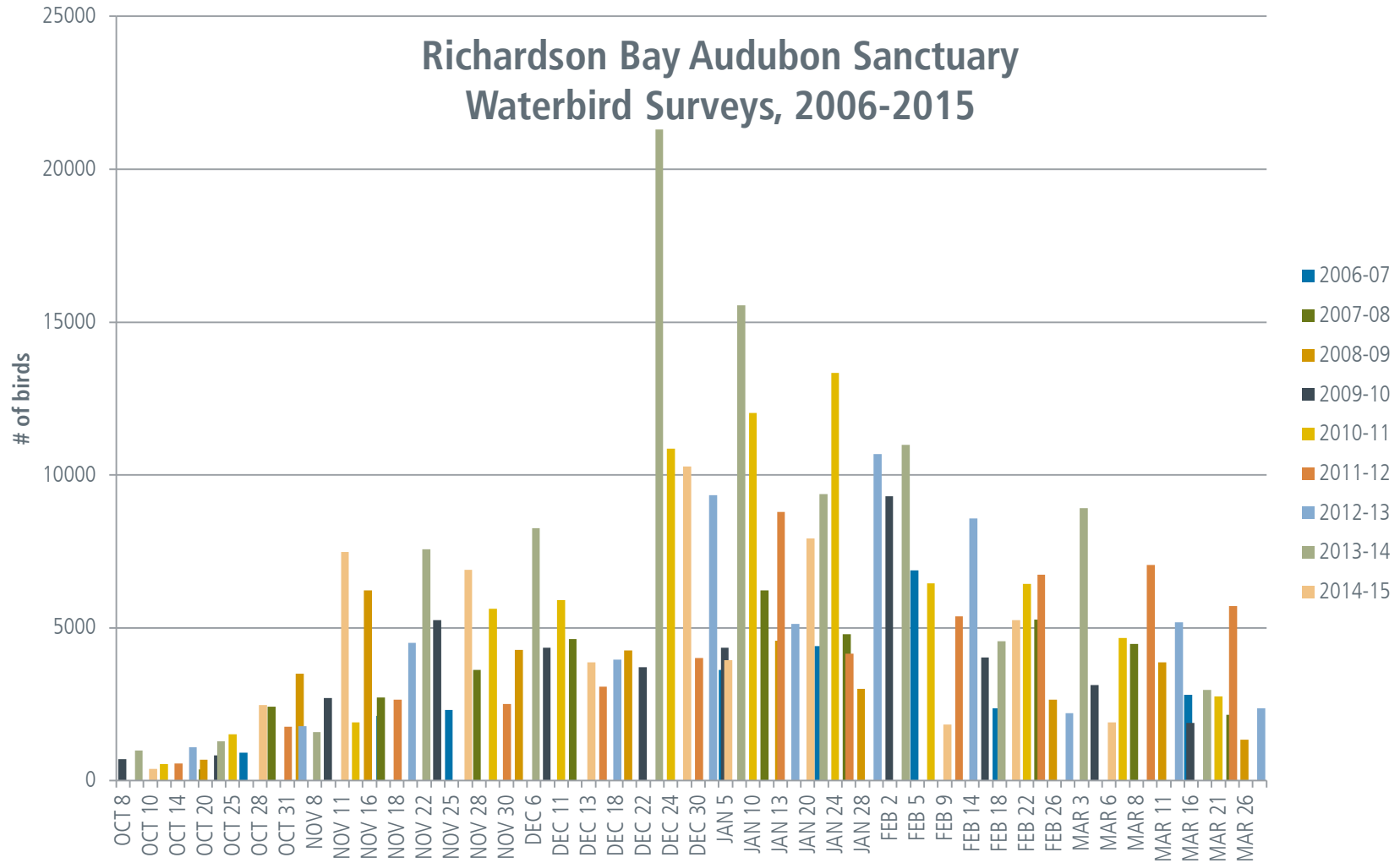
Source: Keith Merkel

Environmental Issues



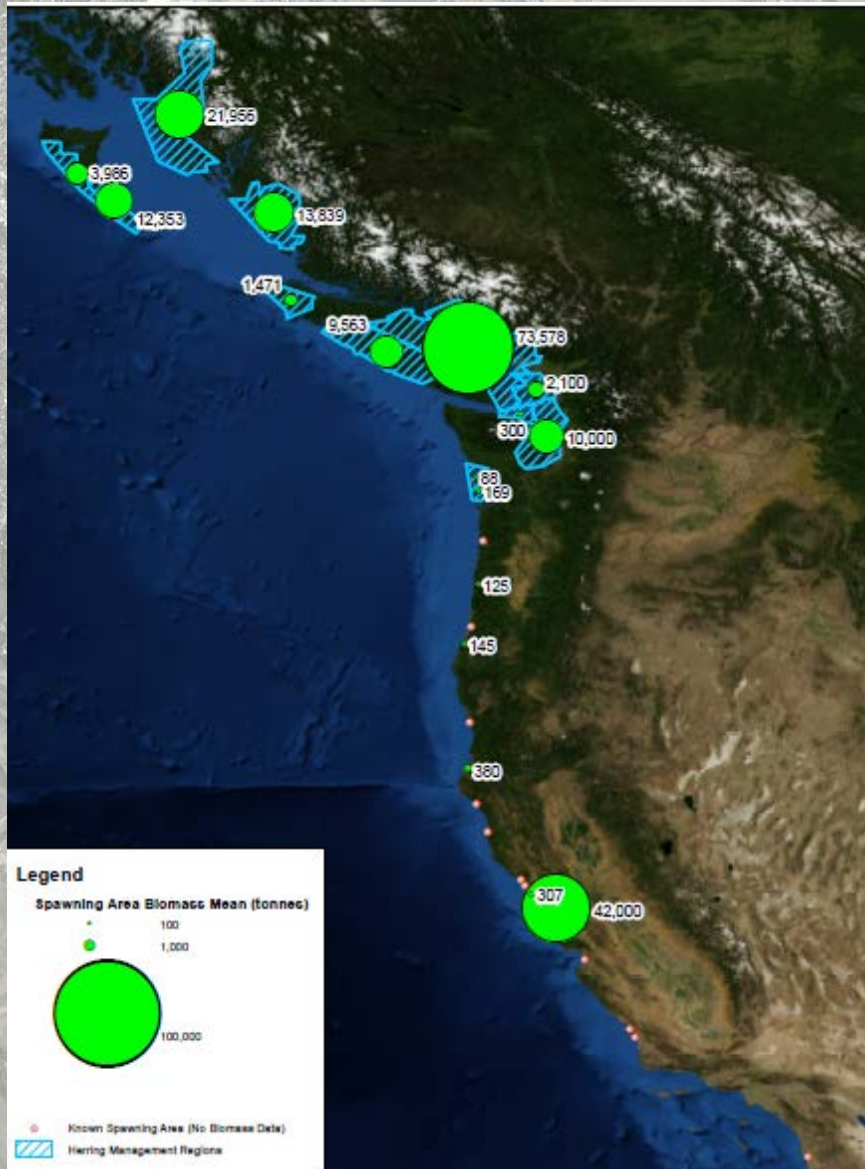
Source: Google Earth April 2013

Environmental Issues



Environmental Issues

Pacific herring spawning biomass



Environmental Issues

California Department of Fish and Wildlife

Office of Spill Prevention and Response (OSPR)

- **Mission: To provide the best achievable protection of California's natural resources by preventing, preparing for, and responding to spills of oil and other deleterious materials, and through restoring and enhancing affected resources.**
- **Major pollution response authority for wildlife and habitat.**

GUEST SPEAKER:

Mitch Goode, Warden

State Dept. of Fish and Wildlife

Environmental Issues



GUEST SPEAKER:

Tom Jordan, Emergency Services Coord.

Marin County Office of Emergency Services

Disaster Response Challenges:

- **Unknown number of individuals who may require services after event**
- **Minimal participation in Alert Marin self-registration**
- **Logistical complications in the event of a major release of oil or other deleterious material in Bay**

Human Health and Safety



ISSUES

- Established community fabric
- Challenging access to social services
- Unstable housing
- At-risk population
 - Injury or death
 - Food insecurity
 - Poverty
 - Substance abuse

Human Health and Safety



Live-aboard “Anchor outs”

- Social services provided by multiple agencies
- Challenging living conditions on boats
- Limited services on shore (showers, docks, laundry)

GUEST SPEAKER:

Jason Satterfield, Homeless Analyst

Marin County Dept. of Health & Human Services

Human Health and Safety

"Nobody's trying to get these people off the water," he says. "Nobody wants to disrupt their way of life. We just want them to know that if you want to come off the water, if you need help, if you need benefits, let us know."

– Sean Stephens

"Anchor Outs" from Reporting on Health, 7/19/12

- **VA Health Care**
- **VA Pension for war time veterans**
- **California Veterans Homes**
- **New Beginnings and Mill Street Program, VA GPD program**

GUEST SPEAKER:

Sean Stephens, Veterans Service Officer
Marin County Veterans Service Office

Human Health and Safety



GUEST SPEAKER:

Rev. Paul Mowry, Pastor

Sausalito Presbyterian Church

Chaplain, Sausalito PD

Public Safety and Law Enforcement



Increases in the number of anchored vessels:

- Increased complaints regarding the Turney Street Ramp, speeding vessels, crime (real and perceived)
- Inability to rent slips next to the Schoonmaker public access docks
- Increased demand on facilities (parking lot, showers, vessels seeking safe harbor, etc.)

GUEST SPEAKERS:

Jennifer Tejada, Chief

Sausalito Police Department

David Stires, Deputy

Marin County Sheriff's Marine Patrol

Public Safety and Law Enforcement

Law Enforcement Response

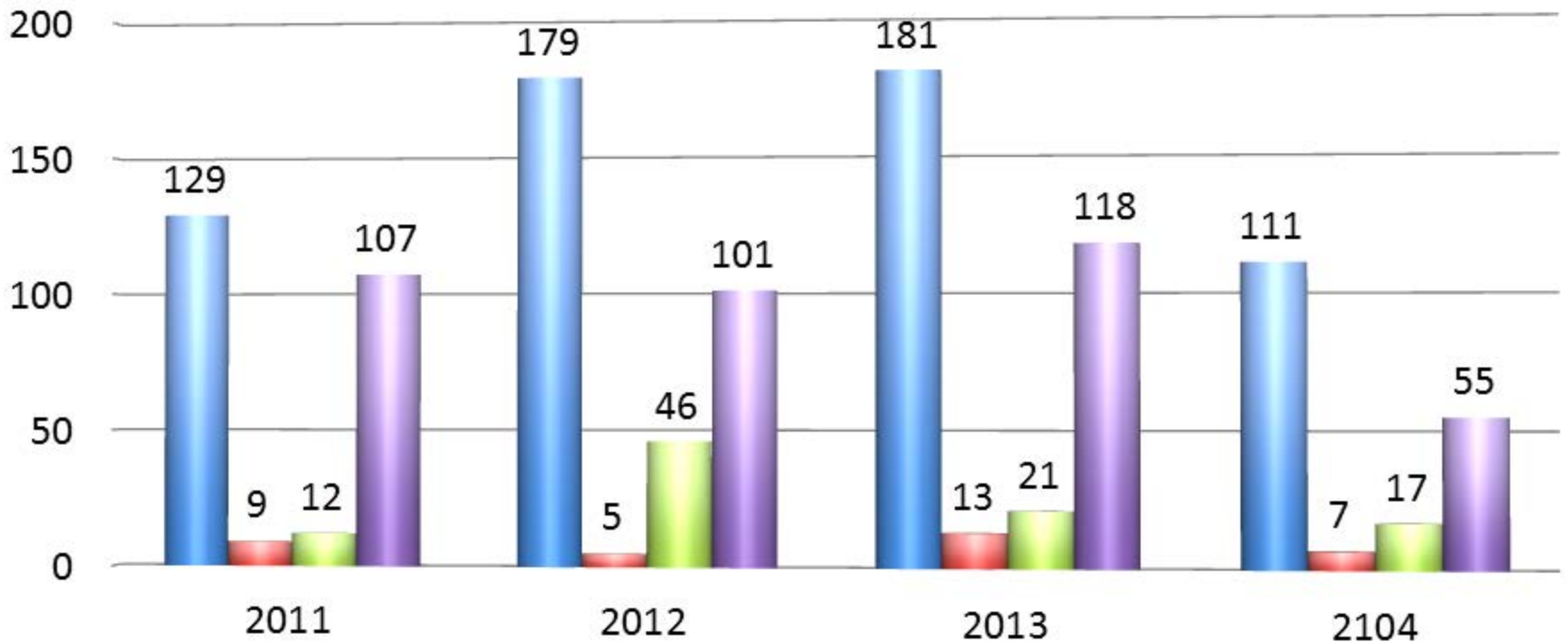
Collaboration between RBRA, USCG, MCSO to address numerous issues:

- Provide health services and other resources
- Increased vessel & life vest inspections
- Identifying and removing abandoned vessels
- Increased environmental enforcement (e.g. hazardous materials stowed on deck, locating oil and fuel leaks, etc.)
- Identifying and arresting those associated with theft, Boating Under the Influence (BUI) and drug offenses



Public Safety & Law Enforcement

SAUSALITO PD Marine Unit Activity



RED: Arrests
BLUE: Police Contacts
Green: Citations
Purple: Warnings

Source: Sausalito PD and County Sherriff

Navigational Hazards & Property Damage



- 10-20+ vessels break away during a major storm event
- Annually, 20-35+ vessels break away depending on storm frequency and severity
- Navigational hazards from sunken boats
- Hazardous materials release
- RBRA rapid response program

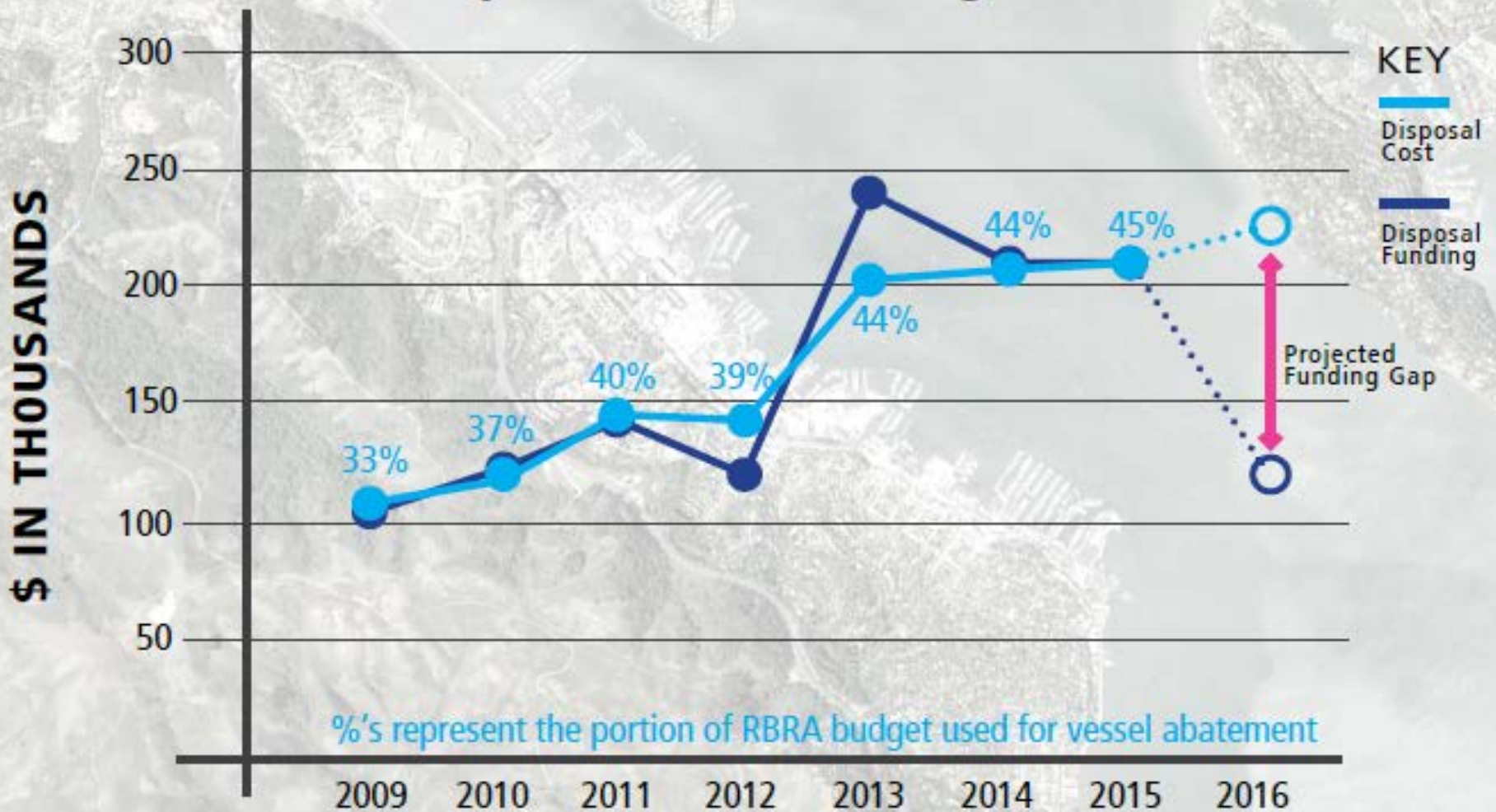
RBRA Operations & Finances

The Numbers

- Average annual disposal cost per vessel is increasing: \$1,600 (2009) to \$4,000 (2014)
- Highest to-date disposal cost for a single vessel: \$60,000+
- Average annual number of vessels disposed has reached 63
- 2008 – 2014 State funding:
 - increased from \$120,000 to \$180,000 for disposal
- 2016 and beyond State funding reduced to \$120,000
- Rising costs for Rapid Response Team

RBRA Operations & Finances

Vessel Disposal Cost & Funding



\$3,300 = Average disposal cost per vessel for the years 2012-2014

\$25,000 = Highest to-date disposal cost for a single vessel

Next Steps

May 7th RBRA Board Meeting

- **Community Meeting Summary Report**
- **Staff/Subcommittee Recommendations based on community input**
- **Approve new budget for FY 2015-2016**

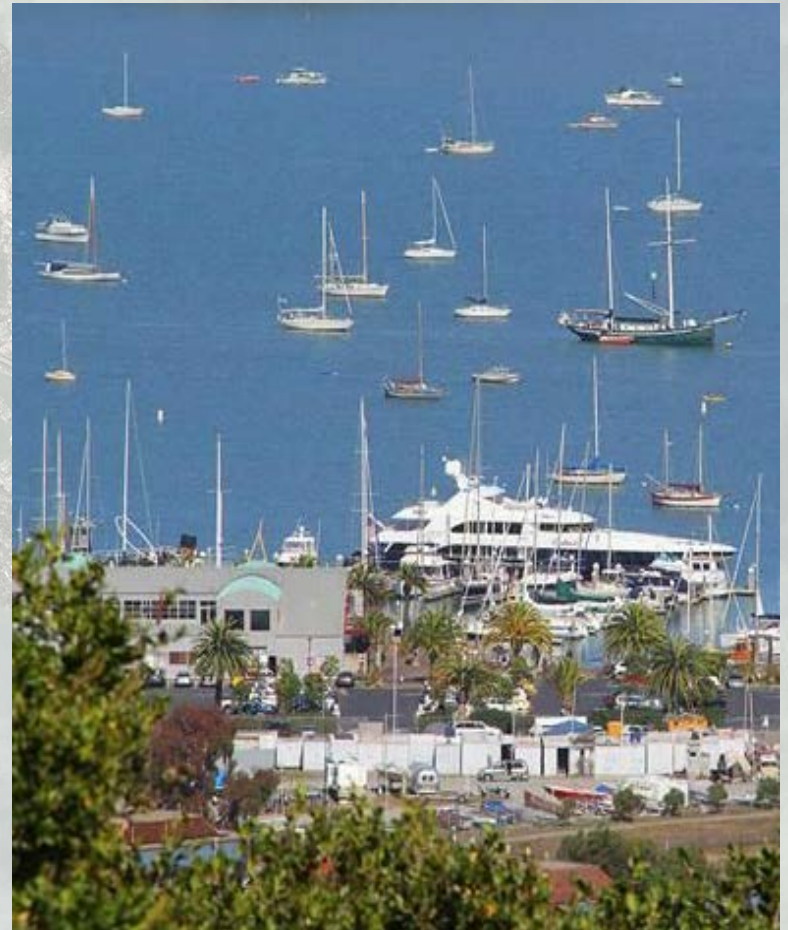
CREATING A SUSTAINABLE OPERATION



CREATING A SUSTAINABLE OPERATION

DRAFT MANAGEMENT GOALS

- Reinforce maritime use and heritage
- Protect bay ecology
- Ensure public health, safety, and wellbeing
- Manage anchorage in a fiscally sustainable manner
- Promote a welcoming and safe harbor for all to enjoy
- Address public improvements and facilities



Break Out Group Exercise

ISSUES & OUTCOMES

- Look for the number on your handout and proceed to that table
- Introduce yourself and where you are from
- Identify your top 2-3 project issues
- Discuss these issues and brainstorm recommendations
- Facilitator will help help take notes and summarize

Please fill out the comment card on the back of the handout with additional feedback

Break Out Group Exercise

ISSUES & OUTCOMES

Environmental: fishing/spawning, eel grass “crop circles,” habitat, trash, hazardous materials, sinking vessels, sewage, water contamination (oil, diesel, etc.)

Human Health & Safety: long-term community fabric, range of users, at-risk population, social programs, services and amenities

Public Safety & Law Enforcement: vessel registration program, marine patrol, safety and seaworthiness, illegal activities

Navigational Hazards: sunken/drifted vessels, debris from vessels

Property Damage: poorly anchored boats cause damage to other boats, docks, marinas, land-based property, marshes

RBRA Operations & Finance: RBRA costs and costs to RBRA members and the State, disposal, rescue and recovery, sanitation

Regulatory: RBRA, BCDC, State Lands Commission, regulations and statutes, RBRA Special Area Plan, other Local, State, and Federal, jurisdictional interplay

Facilities / Amenities: access to/from shore, public dock access, scarcity of moorings, marina/bay pump-outs, limited shore-side facilities, visual/view corridor, business impacts, recreational boating

An aerial photograph of Richardson's Bay, showing a mix of urban development, green spaces, and water. A semi-transparent grey banner is overlaid across the middle of the image, containing the title and date in white and blue text.

Richardson's Bay Anchorage Management

Community Workshop March 14th, 2015